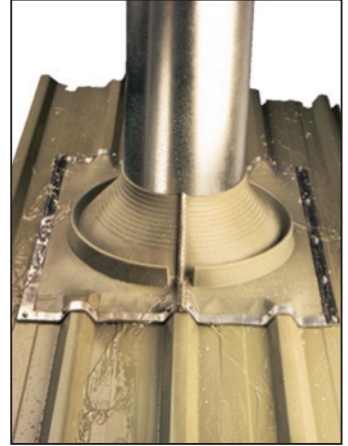


# Dektite Retrofit Soaker

Designed to flash where access to installation is restricted

The Dektite Soaker Flashing is an Alternative Solution to NZBC E2/AS1. As such, acceptance of local council must be obtained before specifying and installing this product.

- ✓ Like Dektite Retrofit, they are designed to flash where access to installation is restricted.
- ✓ The unique crimp closure mechanism makes pipe or vent flashing an elementary wrap and seal procedure requiring no soldering or special tools.
- ✓ The Dektite Retrofit Soaker will flex with the roof decking without cracking or leaking and their smooth tray area means water run-off is super efficient.
- ✓ EPDM withstands temperatures from -50°C to 115°C and up to 150°C intermittently.



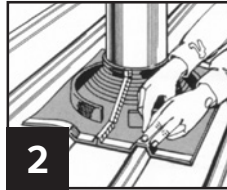
## One Standard Size: for 235 - 425mm pipes

CODE	BASE (MM)	PIPE (MM)	ROOF PITCH
RFS 4	750 x 660	235-425	Up to 45°

## Installation Instructions:



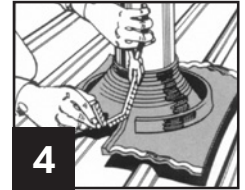
1 Measure outside pipe diameter and trim cone exactly where indicated.



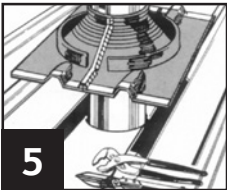
2 Mark out area where ribs of roof panel are to be removed. Where necessary support cut sections of sheet with additional roof framing.



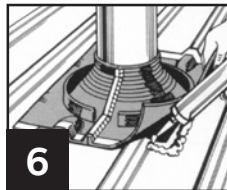
3 With clip in down-stream position tension top of cone around pipe and engage metal teeth in opposing pockets.



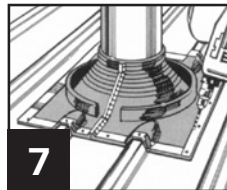
4 Crimp the top three clips with pliers. To assist in completion of crimp, place hand behind the seam for support and continue crimping. Do not overcrimp.



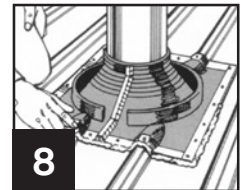
5 Form Dektite base into contours of roofing sheet, positioning loose strips on either side of cone in best position to ensure drainage of pan or tray and trim sides if necessary. Trimming should be considered prior to cutting of the roof sheet.



6 Apply a generous bead of neutral cure 100% silicone sealant (roof and gutter approved) to underside of Dektite base and press to contour of sheet profile.



7 Fasten flashing to roof using washered self drilling screws or sealed rivets. Secure clip by placing a fastener either side of the clip. Fix integral aluminium strips from centre outwards before attaching loose strips provided.



8 Apply neutral cure 100% silicone sealant (roof and gutter approved) to the top of crimp closure and any other potential leak areas.